

Fused Collage using fabric and paper napkins – Sunset Flowers

By Jennifer O'Brien – JT Trading Corporation, www.sprayandfix.com



Choose your fabric and napkin, light weight tissue paper or newsprint design. We are using images from a napkin.

You will need a half yard for your border fabric and a fat quarter for all other fabrics.

Next, pull together any other items you think you will use in your collage. Here we have collected some old lace pieces and some ribbon. You may not use them all but it is nice to have many selections to choose from.



Open your napkin so you can see the total image.



Cut out the images of interest.

You only need the top layer of paper that the image is printed on.

Separate the layers and discard the extra plies of white paper keeping the top image for use in the collage.





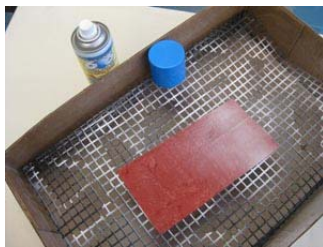
Cut fabric to sizes needed. This project uses the following-

Layered background for flowers cut -

Yellow 3"W x 7"H, Rust red 4"W x 8"H

Background center fabric cut 20.5"W x 12.5"

Frame cut 3.5"W x 12.5" L (cut 2 for sides), 3.5"W x 26.5"L (cut 2 for top and bottom)



When spraying fusible on fabric you need to spray only the back. Spray an even snowy coating from about 10 inches away. Use a spray box to catch any overspray. (It helps to make a spray box with a grid that raises your work above the bottom surface. This is so the air from the can will blow under the grid and not move your pieces). Spray all 6 rectangles, back side with adhesive.



When working with light weight paper like napkins and tissue paper it is good to spray both sides of the paper with the Spray. This laminates the paper with the adhesive and gives the paper more durability. Spray all three images. First spray the back and then the front. Leave them in the spray box until you are ready to use them, front side facing up so you do not forget the correct orientation.



When laying out your composition use a ruler to keep the correct distance between the different elements. This is very organized so you need to keep 2 inches finished all around the window openings and the ruler helps keep this accurate. So top, bottom and sides you need 2 ¼ inches in order to have your seam allowance to add the frame. Between the flowers you need just 2 inches as these are fused in place.



Arrange placement of pieces on background fabric to look like the layout to the left. First place the 4x8, then place the 3x7 on top, now center the paper napkin image on the 3x7 piece.



Move the total collage on the background fabric to the ironing board. Place parchment paper or a Teflon pressing cloth over the project as seen at left. This prevents the glue on top of the paper from sticking to the iron. Set iron on high/cotton or higher setting, press moving slowly across the quilt. It will take about 20 second to heat set the adhesive. Press across the front then keeping paper in place turn everything over and press from the backside. Let cool and remove paper.

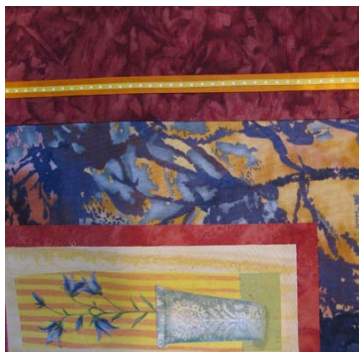


Now it is time to add your embellishments.

We will add lace and ribbon. Place these items wrong side up in the spray box and spray evenly with adhesive. Place the lace in your chosen area right side up and cover with parchment paper and iron in place. Repeat for ribbon and any other embellishments you would like to add.



Here is a look at the lace used in this project. Spray the back of the lace. Place in proper location. Cover with Parchment Paper and fuse with iron set on High. Then turn over and press from back to insure strong bond. This extra pressing from the back is needed when you are fusing a thick lace or embroidered item.



This is a double ribbon frame. Iron ribbons on high setting first as some ribbons shrinks when ironed with a high heat. Measure and cut to lengths needed. (I cut a little longer and trim later) Place wrong side up in spray box and spray with 606 Spray and Fix. Lay out widest ribbon first. Trim to overlap corners or tuck raw edge under to finish corners. Fuse in place. Layer second smaller ribbon on top of first. Trim and fuse in place.



Layer with batting.

Baste with 505 Spray and Fix.

Quilt over all as desired.

Visit www.sew-craft.com to order supplies