

modern  
patchwork®

# Agave

by AMY FRIEND

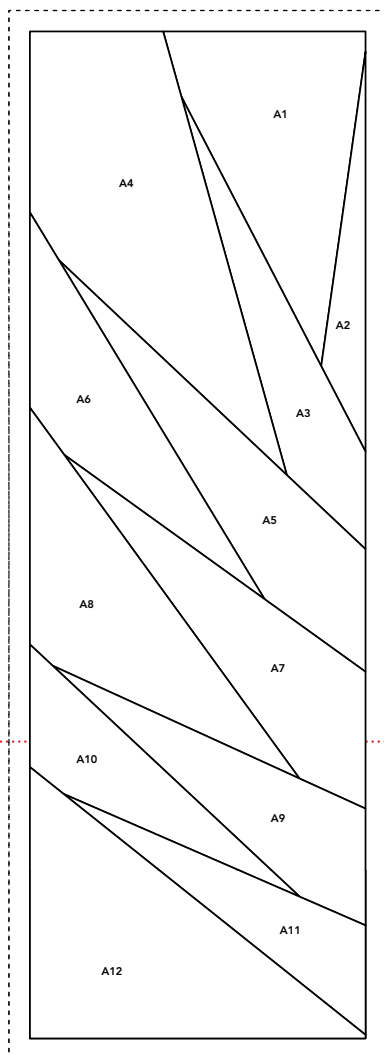




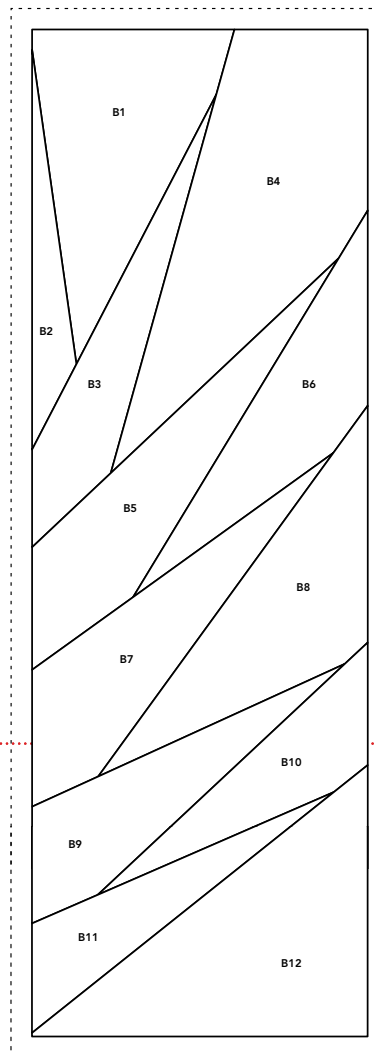
1a

modern  
patchwork

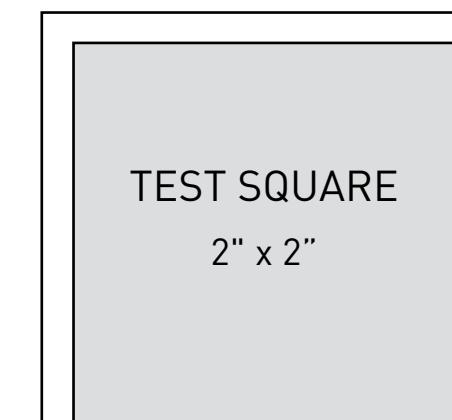
© 2018 F+W Media, Inc.



1b



2a



2b

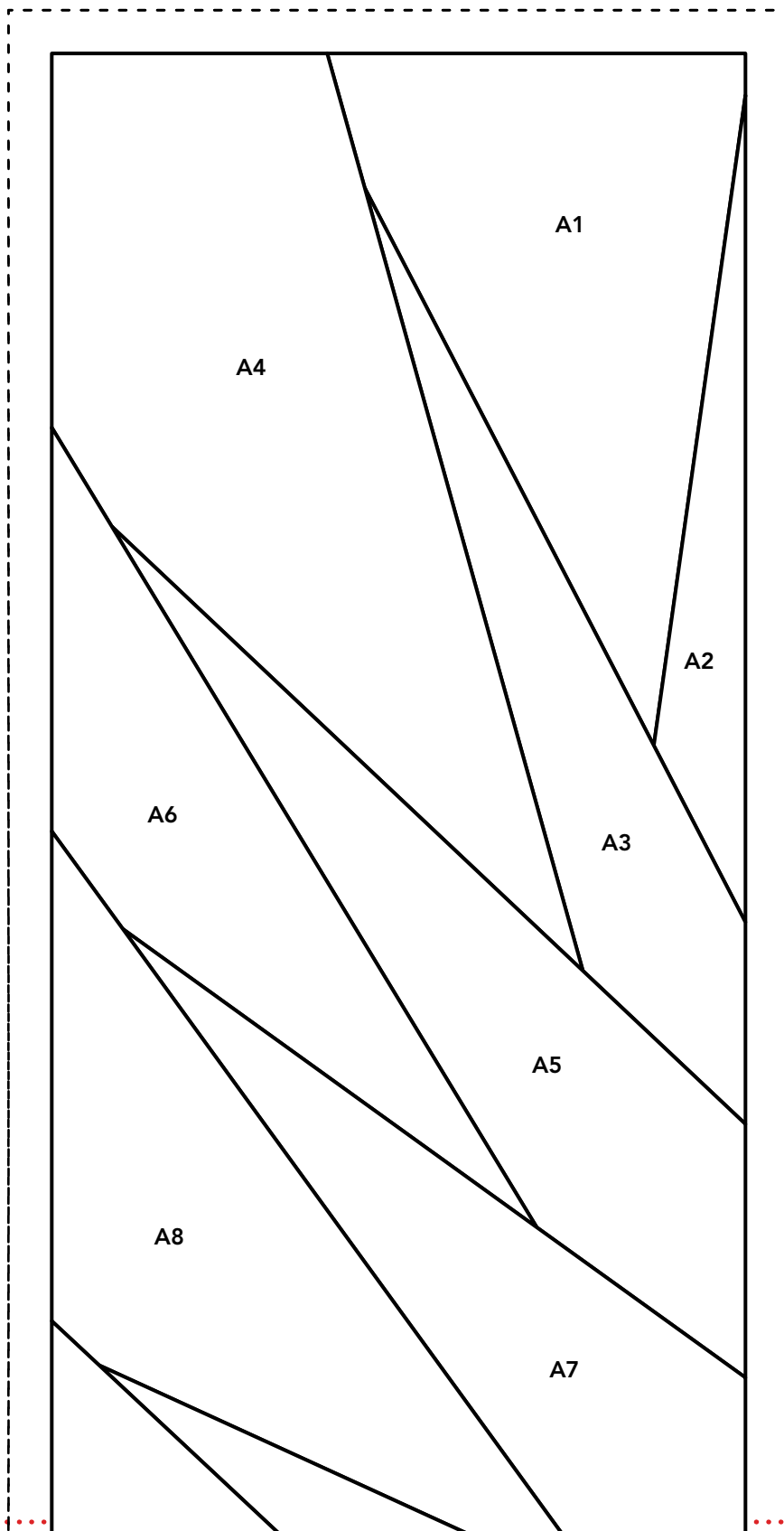
### Assembling the Full-Size Pattern

1. Before printing, check that the printer is set to print at 100% with no scaling.
2. Print the page with this Test Square. If the square is 2" x 2", print the remainder of the pattern.
3. The Preview Page shows how the pattern will look when it is assembled. Pages are numbered in rows. The first row of pages is numbered, 1a, 1b, 1c, and so on.
4. To assemble the pattern: trim, overlap, or fold at the dotted line around each page. Tape the pattern together.

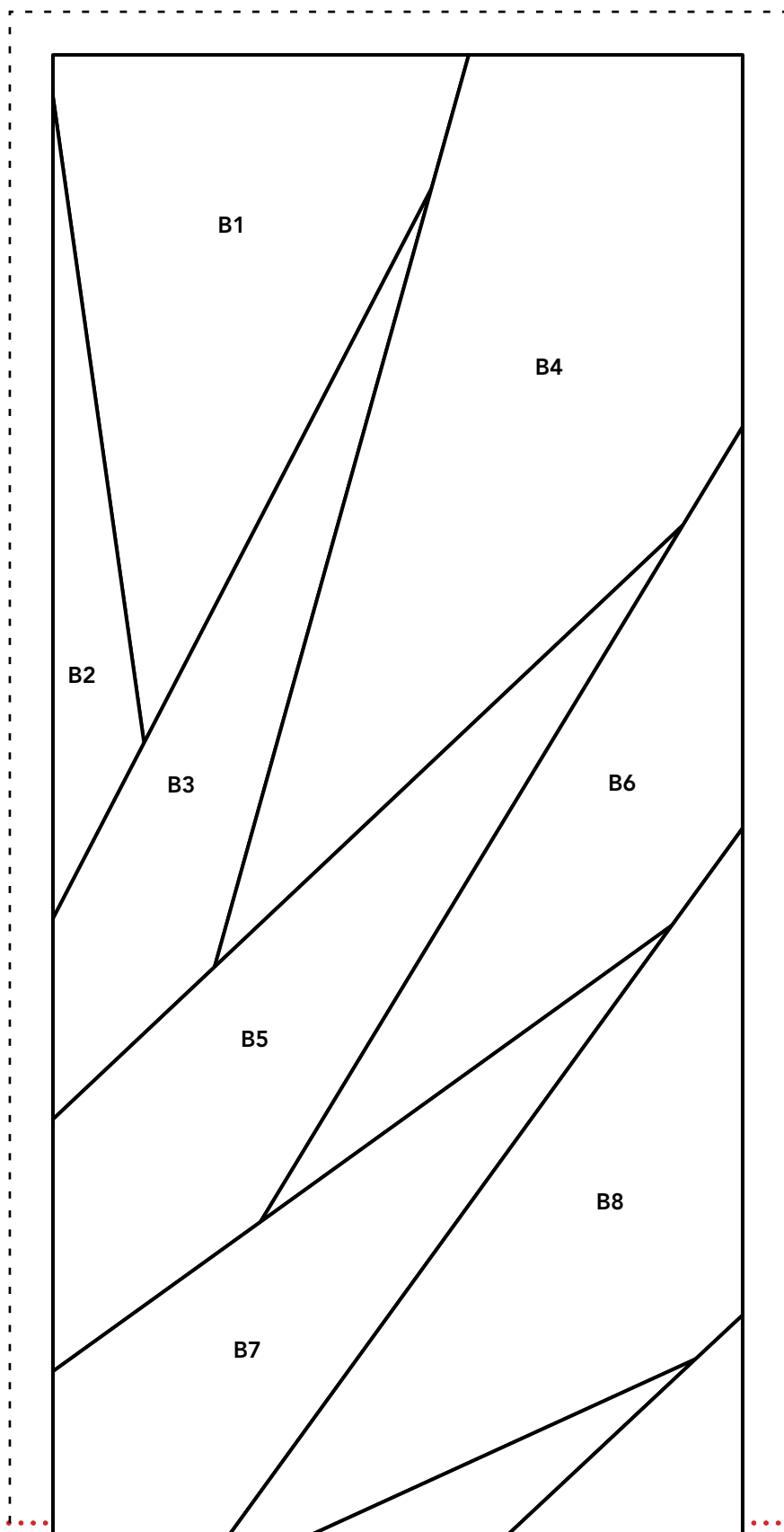
1a

# modern patchwork®

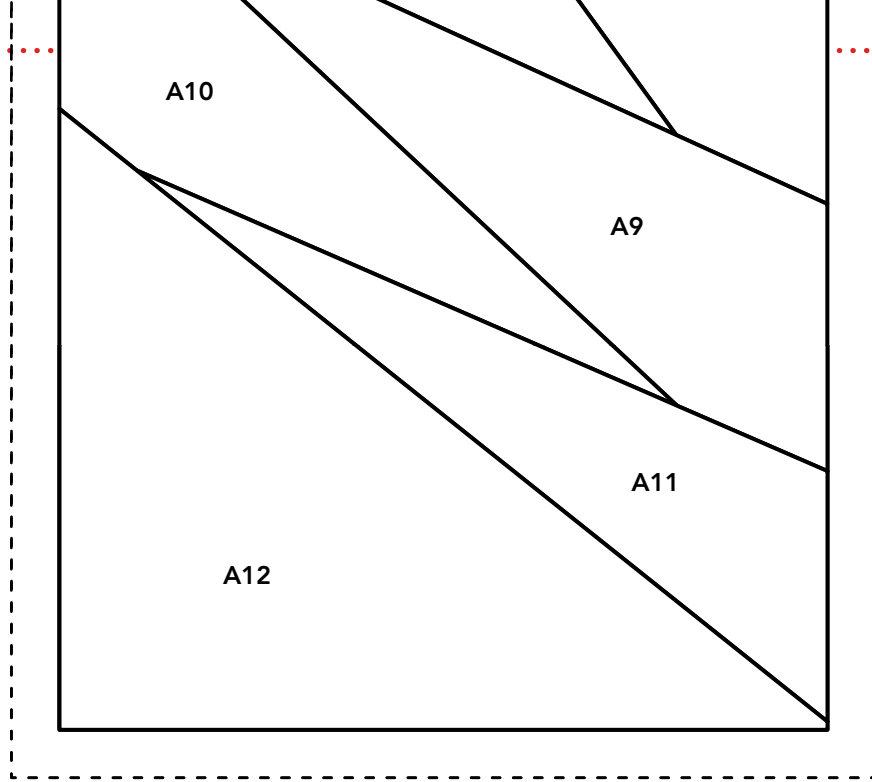
© 2018 F+W Media, Inc.



1b



2a



2b

