

Chevron Legacy Web Bonus: Table Runner

Designed by
SHERRI BAIN
DRIVER

Skill Level
**CONFIDENT
BEGINNER**

Finished Table
Runner Size
17½" x 40"

Note: Appliqué
templates (at
end of pattern)
are printed
without seam
allowance.

*The pattern for the
67½" x 89½" quilt is in
the November/December
2013 issue of McCall's
Quilting.*



Fabric Requirements

Assorted prints (pieced strip)	½-1 yd. total
Gold/navy stripe (sashing)	¼ yd.
Red texture (border)	½ yd.
Green texture (vines, leaves)	½ yd.
Cream/green/red stripe (leaves)	¼ yd.
Dark red print (binding)	½ yd.
Backing	1½ yds.
Batting size	24" x 46"
Bias bar, ⅜" (optional)	

Planning

Dig into your stash and find your favorite scraps! This simple-to-piece-and-appliqué table runner is perfect for showcasing strips of your most cherished prints. Using a stripe as one of the fabrics for the appliqué leaves gives the look of veins.

Cutting Instructions

(cut in order listed, before cutting
appliqué)

Note: Cutting instructions for appliqué
shapes are on templates at the end of
pattern.

Assorted prints—**cut a total of:**

- 20-40 strips 1-2½" x 6½"
- Gold/navy stripe
- *2 strips 1½" x width of fabric (WOF)
- Red texture
- *2 strips 5" x WOF

Green texture

**1 square 14" x 14" (for 1½" x 100"
bias-cut strip)

Dark red print

4 strips 2½" x WOF (binding)

*Strips include extra length for trimming.

**For instructions to make continuous
bias from a square, visit our website
at McCallsQuilting.com and click on
Lessons.

Assembling the Table Runner Top

Note: Refer to **Assembly Diagram** for following steps.

1 Join assorted 1-2½" x 6½" strips to make pieced strip 40" long.

2 Sew gold/navy stripe WOF strips to sides; trim even with ends of pieced strip. Sew red texture WOF strips to sides; trim even.

Adding the Appliqué

3 Referring to **Diagram I**, fold green texture 1½" x 100" bias-cut strip in half, wrong sides together. Stitch ¾" from fold. Trim seam allowance to ⅛". Press tube flat, centering seam allowance on back so raw edge isn't visible from front. Using ¾" bias bar makes pressing faster and easier. From tube, cut 2 vines 50" long.

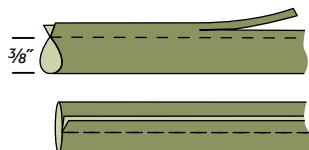
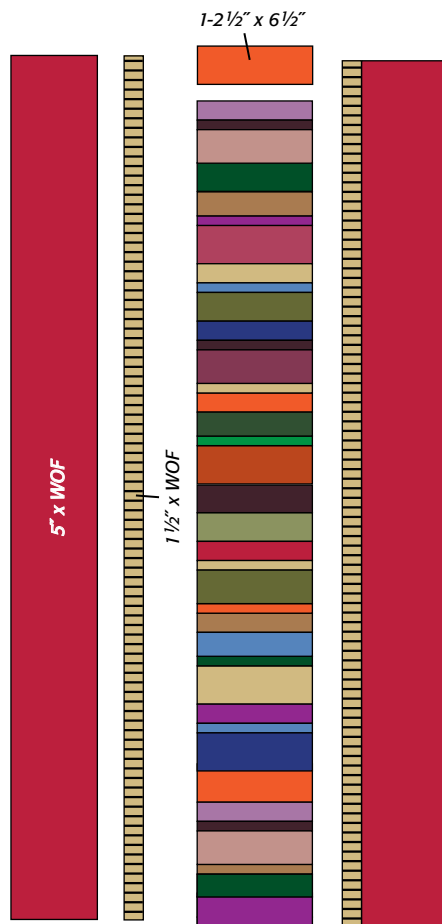


Diagram I

4 Referring to **Diagram II** and keeping in mind ¼" seam allowance on outside edge for binding, position vines and appliqué shapes in alphabetical order, covering vine ends with leaves. Appliqué in place.

Quilting and Finishing

5 Layer, baste, and quilt as desired. Bind with dark red print.



Assembly Diagram

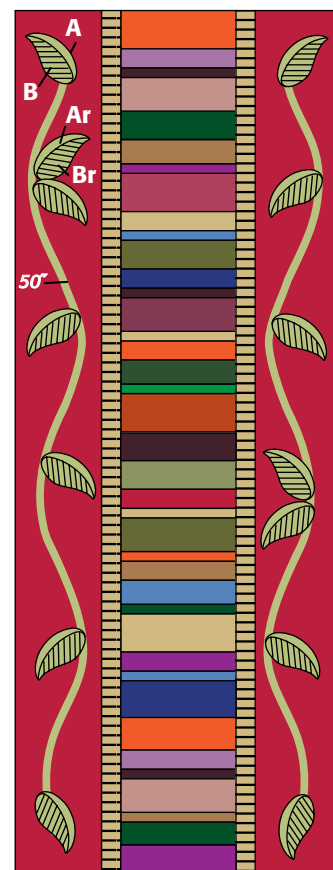
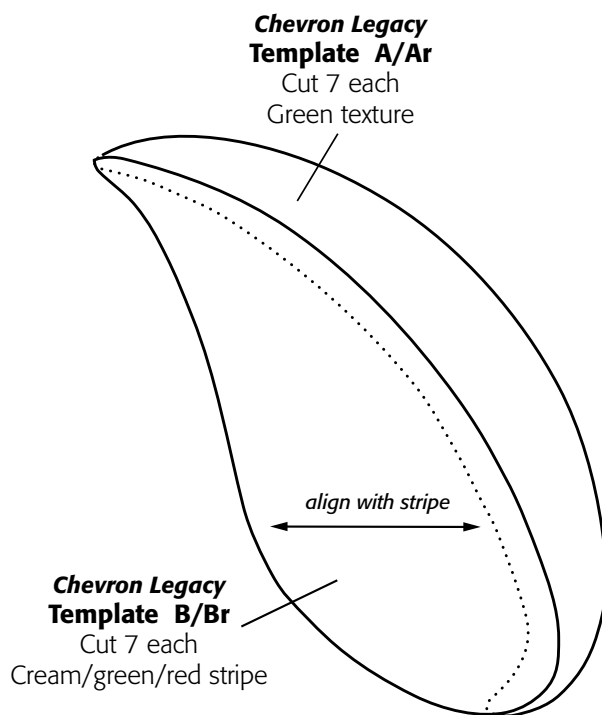


Diagram II



This box measures
2 inches by 1 inch. Use
for accurate scale when
printing